

NutDrill

NutDrill ND Professional

Watching videos
demonstration on
You Tube
Seeking "RiveDrill"



www.rivedrill.es

M8 (W-5/16")
M6 (UNF10-32)
M5 (UNC10-24)
M4 (UNC8-32)
M3 (UNC6-32)



Nut Drill Attachment. Compatible with most 10mm chuck drill drivers.

Suits M3/M4/M5/M6/M8 Insertable steel nuts (UNC6-32/UNC8-32/UNC10-24/UNF10-32/ W 1/4"-20/W 5/16"-18). Interchangeable 5 mandrel & nose pieces (included) to suit common nuts.

Quick & Easy Riveting. Takes the effort out of riveting



Specification

Drive Shaft: 9 mm hexagon
Carcase: Steel and rubber
Mandrel & Nose Piece included: 4 units
Maximum Tensile Strength: 10,000 Newton
Measure: 140mm x Ø60mm
Weight: 600 grams



5 Mandrel & Nose Pieces Included



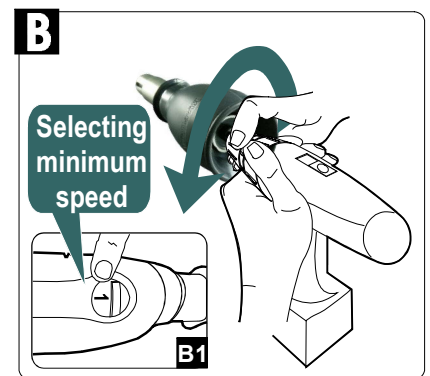
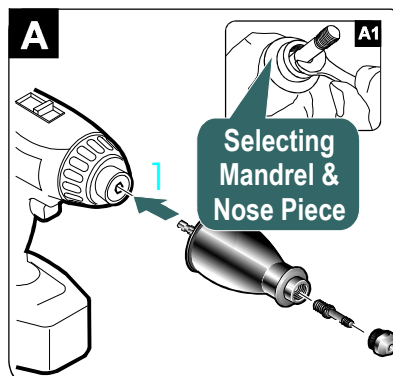
Removable Fasteners

Excellent solution for small thicknesses



Attaching RiveDrill To Your Drill (Any Brand)

- A) Insert drive shaft (1) into drill chuck in the same manner as a drill bit.
- A1) Selecting Mandrel & Nose Piece
- B) Tighten chuck.
- B1) **Attention.** Selecting minimum speed



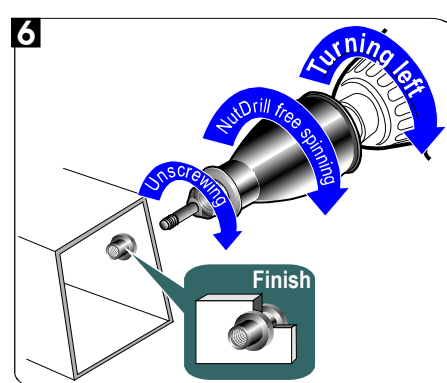
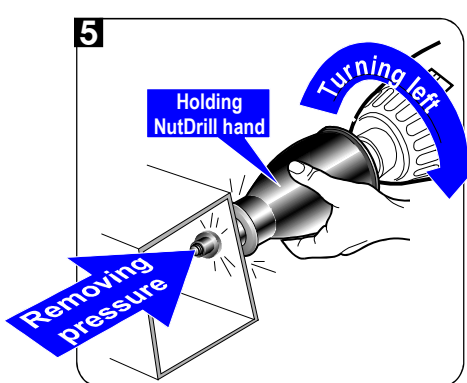
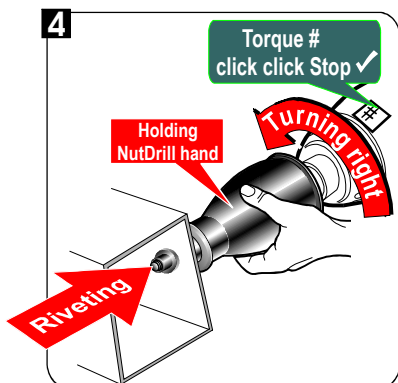
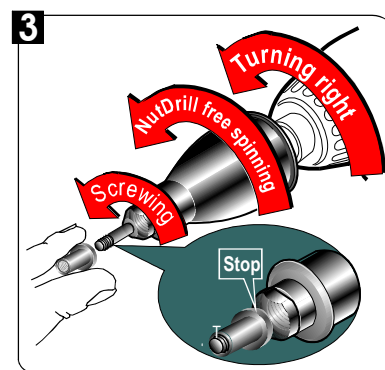
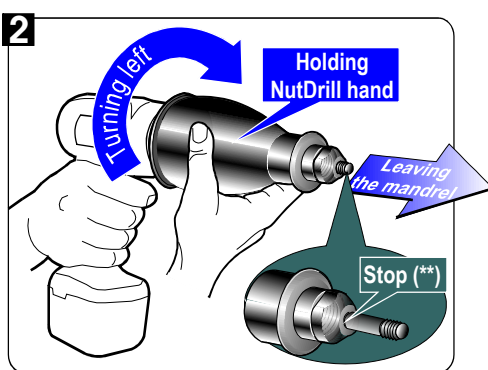
NutDrill ND

Professional
**Operating
NutDrill**

Fig.	Drive the drill	Hand holding	Result	Attention
1	First experience	Torque from less to more	Testing the air riveting	(*)
2	Left	Yes. Mildly	Leaving the mandrel	(**)
3	Right	No	Tightening nut	
4	Right	Yes	Clinching nut	
5	Left, little	Yes. Little	Eliminating pressure	
6	Left	No	Unscrewing nut	

(*) Select the necessary torque, trying first low to high, clinching nuts in the air. No knock on the ends of the route (**).

Size Nut	# Torque approximate
M3	>2 Nm
UNC6-32	<3 Nm
M4	>4 Nm
UNC8-32	<5 Nm
M5	>6 Nm
UNC10-24	<7 Nm
UNF10-32	>7 Nm
M6	<8 Nm
W1/4"-20	>8 Nm
M8	>10 Nm
W5/16"-18	<10 Nm

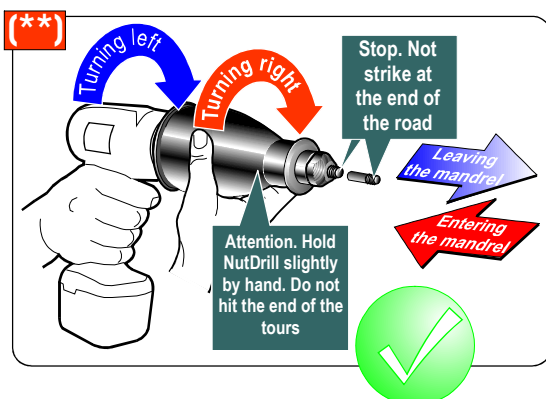

Substituting Mandrel & Nose Pieces

Attention.
Left thread

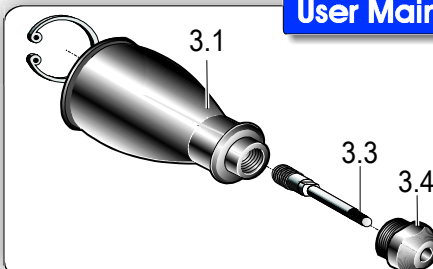
Attention.
Left thread

Wrench 22 mm

Wrench 8 mm

Important Suggestions ()**


(**) Avoid hitting the end of the tour. For this to stop the drill before the end. Hold "NutDrill" **slightly** free to rotate. **Misuse may void the warranty.**

User Maintenance.


Parts NutDrill ND
3.1 - Complete body
3.2 - Complete rotor
3.3 - Mandrel (one piece)
3.4 - Nose piece (one piece)

Warranty. Declaration of the manufacture according to 93/37/EC.

More information: www.rivedrill.es - nuria.andrea@rivedrill.net - Fax (Madrid Spain) +34 913526577